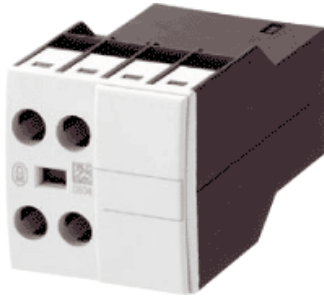


Type: **DILA-XHI20**

 Article No.: **276422**

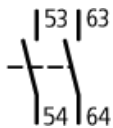
 Sales text **Contactor relays,aux.cont.mod.,2-pole**


With interlocked opposing contacts (exception: ...XHI(C)V...)

### Ordering information

Connection technique			Screw terminals
Description			2 pole
Contacts			
N/O = Normally open			2 N/O
Rated operational current			
AC-15 220 V 230 V 240 V	$I_e$	A	4
AC-15 380 V 400 V 415 V	$I_e$	A	4
Conventional thermal current	$I_{th}$	A	16
Code number and version of combination			
DILA(C)-40			60E
DILA(C)-31			51
DILA(C)-22			42

### Contact sequence



### Notes concerning the product group

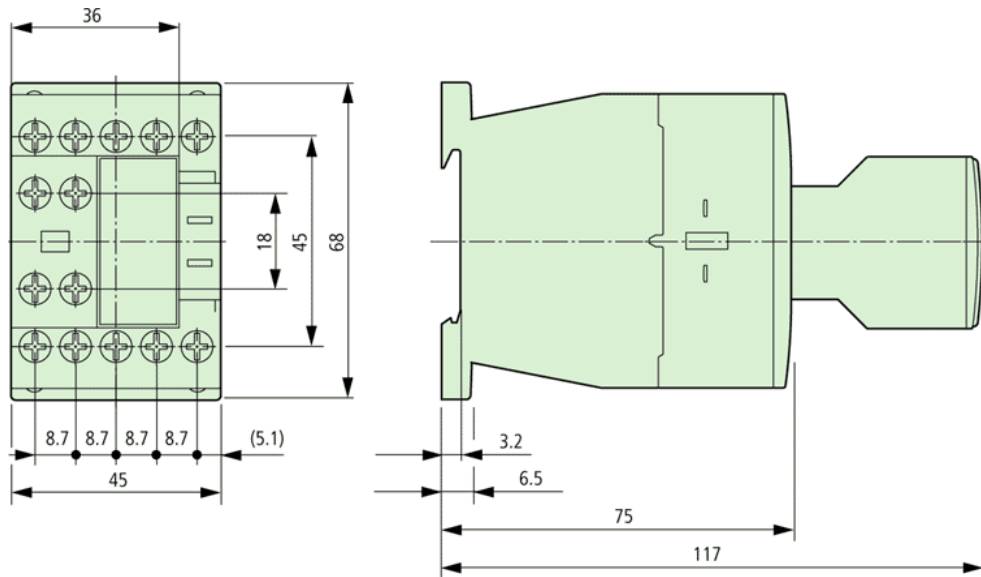
Version E combinations correspond to EN 50011 and are to be preferred; other combinations correspond to EN 50005

The DC operated contactor DILA(C)-22 must only be combined with 2 pole auxiliary contacts.

NO<sub>E</sub>: early-make NO contact

<b>Auxiliary contacts</b>			
Interlocked opposing contacts within an auxiliary contact module (to IEC 60947-5-1 Annex L)			Yes
N/C contact (not late-break contact) suitable as a mirror contact (to IEC/EN 60947-4-1 Annex F)			DILM7 – DILM32
Rated impulse withstand voltage	$U_{imp}$	V AC	6000
Overtoltage category/pollution degree			III/3
Rated insulation voltage	$U_i$	V AC	690
Rated operational voltage	$U_e$	V AC	500
Safe isolation to VDE 0106 Part 101 and Part 101/A1			
between coil and auxiliary contacts		V AC	400
between the auxiliary contacts		V AC	400
Rated operational current			
AC-15			
230 V	$I_e$	A	4
380/415 V	$I_e$	A	4
DC-13 L/R – 15 ms			
24 V	$I_e$	A	10
60 V	$I_e$	A	6
110 V	$I_e$	A	3
220 V	$I_e$	A	1
Conv. thermal current	$I_{th}$	A	16
Control circuit reliability (at $U_e = 24$ V DC, $U_{min} = 17$ V, $I_{min} = 5.4$ mA)	Failure rate		-8, < 1 one failure at 100 million operations
Component lifespan			
at $U_e = 230$ V, AC-15, 3 A	Operations	$\times 10^6$	1.3
Short-circuit rating without welding			
max. fuse		A gG/gL	10
<b>Notes</b>			
<b>Notes</b>			See transparent overlay "Fuses" for time/current characteristics (please inquire) not with DIL...-XHIV and DIL...-XHICV Making and breaking

## Dimensions



Moeller GmbH, Hein-Moeller-Str. 7-11, D-53115 Bonn  
E-Mail: [catalog@moeller.net](mailto:catalog@moeller.net), Internet: [www.moeller.net](http://www.moeller.net), <http://catalog.moeller.net>  
HPL-C2007G V2.1 © 2007 by Moeller GmbH